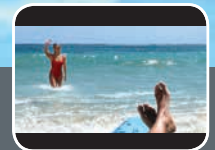
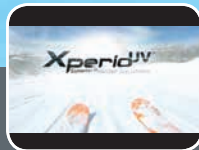




# Xperio<sup>UV</sup>™

*the best vision under the sun*



## New! Xperio UV™ Superior Polarized Sun Lenses

- Eliminates 100% blinding reflective glare
- Offers the maximum UV protection available—Eye-Sun Protection Factor (E-SPF®) 50+
- Up to **3X** more scratch-resistant than competitive polarized lenses
- Sharpest vision and clarity to see vibrant colors
- Easiest to clean

Why offer your patients anything less?

# Xperio UV™ Availability Chart | 2013

PRODUCT	MATERIAL	RANGE	ADD POWER	MFH	Grey	Brown	Grey-Green
<b>Single Vision Lenses</b>							
Spheric SV	Thin&Lite® 1.67	+7.00 to -10.00			●	●	●
Spheric SV	Thin&Lite® 1.60	+8.00 to -10.00			●	●	
Spheric SV	Airwear®	+6.00 to -10.00			●	●	●
Spheric SV	1.55	+6.00 to -12.00			●	●	●
Spheric SV	TREXA™	+6.00 to -3.50			●	●	●
Spheric SV	1.50	+6.00 to -7.00					
Aspheric SV	Thin&Lite® 1.67	+6.00 to -12.00			●	●	
	Airwear®	+6.00 to -10.00			●	●	
Essilor Sport Solution™ SV	Airwear®	+6.00 to -8.00				●	
<b>Wrap Solutions - Progressive</b>							
Ideal Advanced™ Wrap	Airwear®	+3.00 to -4.00	+0.75 to +3.00	17	●	●	
	1.50	+3.00 to -4.00	+0.75 to +3.00	17	●	●	
<b>Wrap Solutions - Single Vision</b>							
Wrap Spheric	Airwear®	+3.00 to -4.00			●	●	
	1.50	+3.00 to -4.00			●	●	
Wrap Aspheric	Airwear®	+4.00 to -6.00			●	●	●

All designs are available in Xperio Mirrors UV™



Silver



Blue



Gold

To learn more visit [XperioUV.com](http://XperioUV.com)

**Xperio UV™**  
Superior Polarized Sun Lenses



experience

**Xperio UV**™  
*Superior Polarized Sun Lenses*

experience the difference.

Xperio UV™ lenses

For the best vision under the sun



Availability Chart | 2013

**Xperio UV**™  
*Superior Polarized Sun Lenses*

# Xperio UV™ Availability Chart | 2013

PRODUCT	MATERIAL	RANGE	ADD POWER	MFH	Grey	Brown	Grey-Green
<b>Varilux® Lenses</b>							
Varilux Physio Enhanced Fit™	Airwear®	+6.00 to -10.00	+0.75 to +3.50	14	●	●	
	1.50	+6.00 to -10.00	+0.75 to +3.50	14	●	●	
Varilux Physio Enhanced Eyecode™	Airwear®	+6.00 to -10.00	+0.75 to +3.50	14	●	●	
	1.50	+6.00 to -10.00	+0.75 to +3.50	14	●	●	
Varilux Physio Enhanced India™	Airwear®	+6.00 to -10.00	+0.75 to +3.50	14	●	●	
	1.50	+6.00 to -10.00	+0.75 to +3.50	14	●	●	
Varilux Physio Enhanced Azio™	Airwear®	+6.00 to -10.00	+0.75 to +3.50	14	●	●	
	1.50	+6.00 to -10.00	+0.75 to +3.50	14	●	●	
Varilux Physio Enhanced™	Airwear®	+6.00 to -10.00	+0.75 to +3.50	14	●	●	
	1.50	+6.00 to -10.00	+0.75 to +3.50	14	●	●	
Varilux Physio DRx™	Thin&Lite® 1.67	+9.00 to -12.00	+0.75 to +3.50	17	●	●	●
	Airwear®	+6.00 to -10.00	+0.75 to +3.50, +4.00	17	●	●	●
	1.50	+6.00 to -10.00	+0.75 to +3.50, +4.00	17	●	●	●
Varilux Physio Short DRx™	Thin&Lite® 1.67	+9.00 to -12.00	+0.75 to +3.00	14	●	●	
	Airwear®	+6.00 to -10.00	+0.75 to +3.00	14	●	●	●
	1.50	+6.00 to -10.00	+0.75 to +3.00	14	●	●	●
Varilux Physio 360®	Airwear®	+6.00 to -10.00	+0.75 to +3.50	17	●	●	
	1.50	+6.00 to -10.00	+0.75 to +3.50	17	●	●	
Varilux® Physio®	Airwear®	+6.00 to -10.00	+0.75 to +3.50	17	●	●	
	1.50	+6.00 to -10.00	+0.75 to +3.50	17	●	●	
Varilux Comfort Enhanced™	Airwear®	+6.00 to -10.00	+0.75 to +3.50	14	●	●	
Varilux Comfort DRx™	Thin&Lite® 1.67	+9.00 to -12.00	+0.75 to +3.50	17	●	●	●
	Airwear®	+6.00 to -10.00	+0.75 to +3.50	17	●	●	●
	1.50	+6.00 to -10.00	+0.75 to +3.50	17	●	●	●
Varilux Comfort Short DRx™	Thin&Lite® 1.67	+9.00 to -12.00	+0.75 to +3.00	14	●	●	●
	Airwear®	+6.00 to -10.00	+0.75 to +3.00	14	●	●	●
	1.50	+6.00 to -10.00	+0.75 to +3.00	14	●	●	●
Varilux Comfort®	Airwear®	+6.00 to -10.00	+0.75 to +3.00	18	●	●	
Varilux Comfort Short™	Airwear®	+6.00 to -10.00	+0.75 to +3.00	14	●	●	
Varilux Ellipse 360™	Airwear®	+6.00 to -10.00	+0.75 to +3.00	13	●	●	
Varilux® Ellipse®	Airwear®	+6.00 to -10.00	+0.75 to +3.00	14	●	●	
Varilux Sport™	Airwear®	+6.00 to -8.00	+0.75 to +3.50	18		●	

# Xperio UV™ Availability Chart | 2013

PRODUCT	MATERIAL	RANGE	ADD POWER	MFH	Grey	Brown	Grey-Green
<b>DEFINITY® Lenses</b>							
DEFINITY® 3 Plus	Airwear®	+6.00 to -10.00	+1.00 to +3.50	15	●		
DEFINITY® 3	Airwear®	+6.00 to -10.00	+1.00 to +3.50	15	●		
DEFINITY®	Airwear®	+4.00 to -7.00	+1.00 to +3.00	18	●	●	
	1.50	+4.00 to -10.00	+1.00 to +3.00	18	●	●	
DEFINITY Short™	Airwear®	+4.00 to -7.00	+1.00 to +3.00	15	●	●	
	1.50	+4.00 to -10.00	+1.00 to +3.00	15	●	●	
<b>Essilor PAL Lenses</b>							
Essilor Ideal Advanced™	Thin&Lite® 1.67	+9.00 to -12.00	+0.75 to +3.50	17	●	●	
	Airwear®	+8.00 to -10.00	+0.75 to +3.50	17	●	●	
	1.50	+6.00 to -4.00	+0.75 to +3.50	17	●	●	
Essilor Ideal®	Thin&Lite® 1.67	+9.00 to -12.00	+0.75 to +3.50	17	●	●	
	Airwear®	+8.00 to -10.00	+0.75 to +3.50	17	●	●	
	1.50	+6.00 to -4.00	+0.75 to +3.50	17	●	●	
Essilor Ideal Short™	Thin&Lite® 1.67	+9.00 to -12.00	+0.75 to +3.50	14	●	●	
	Airwear®	+8.00 to -10.00	+0.75 to +3.00	14	●	●	
	1.50	+6.00 to -4.00	+0.75 to +3.00	14	●	●	
Accolade Freedom™	Airwear®	+6.00 to -10.00	+0.75 to +3.50	15	●	●	
Accolade®	Airwear®	+6.00 to -10.00	+0.75 to +3.50	17	●	●	
SmallFit® Digital	Thin&Lite® 1.67	+9.00 to -12.00	+0.75 to +3.00	14	●	●	
	Airwear®	+8.00 to -10.00	+0.75 to +3.00	14	●	●	
	1.50	+6.00 to -4.00	+0.75 to +3.00	14	●	●	
Essilor SmallFit®	Airwear®	+6.00 to -10.00	+0.75 to +3.00	14	●	●	
Adaptar® Digital	Thin&Lite® 1.67	+9.00 to -12.00	+0.75 to +3.50	17	●	●	
	Airwear®	+8.00 to -10.00	+0.75 to +3.50	17	●	●	
Adaptar® Short Digital	Thin&Lite® 1.67	+9.00 to -12.00	+0.75 to +3.00	14	●	●	
	Airwear®	+8.00 to -10.00	+0.75 to +3.00	14	●	●	
Ovation® Digital	Thin&Lite® 1.67	+9.00 to -12.00	+0.75 to +3.50	17	●	●	
	Airwear®	+8.00 to -10.00	+0.75 to +3.50	17	●	●	
	1.50	+6.00 to -4.00	+0.75 to +3.50	17	●	●	
Ovation®	Airwear®	+6.00 to -10.00	+0.75 to +3.50	17	●	●	
Essilor Natural® Digital	Thin&Lite® 1.67	+9.00 to -12.00	+0.75 to +3.50	14	●	●	
	Airwear®	+8.00 to -10.00	+0.75 to +3.50	14	●	●	
	1.50	+6.00 to -4.00	+0.75 to +3.50	14	●	●	

# Xperio UV™ Availability Chart | 2013

PRODUCT	MATERIAL	RANGE	ADD POWER	MFH	Grey	Brown	Grey-Green
<b>BI-Trifocal Lenses</b>							
FT-28 Bifocal	Thin&Lite® 1.67	+7.00 to -10.00	+1.25 to +4.00		●	●	●
	Airwear®	+6.00 to -8.00	+1.00 to +3.00		●	●	●
	1.55	+6.00 to -12.00	+1.00 to +3.25		●	●	●
	1.50	+6.00 to -7.00	+1.00 to +3.00		●	●	●
FT-28 Aspheric Bifocal	Airwear®	+4.00 to -6.50	+1.00 to +3.00		●	●	●
FT-35 Bifocal	Thin&Lite® 1.67	+6.00 to -4.00	+1.25 to +4.00		●	●	●
	Airwear®	+6.00 to -10.00	+1.50 to +3.00		●	●	
	1.55	+6.00 to -4.50	+1.00 to +3.25		●	●	●
	1.50	+6.00 to -4.50	+1.00 to +3.00		●	●	●
7x28 Trifocal	Thin&Lite® 1.67	+6.00 to -4.00	+2.00 to +4.00		●	●	●
	1.55	+6.00 to -4.50	+1.50 to +3.25		●	●	●
	1.50	+6.00 to -4.50	+1.50 to +3.00		●	●	●
8x35 Trifocal	Thin&Lite® 1.67	+6.00 to -4.00	+2.00 to +4.00		●	●	●
	1.55	+6.00 to -4.50	+1.50 to +3.25		●	●	●
	1.50	+6.00 to -4.50	+1.50 to +3.00		●	●	●

<b>Digital Single Vision Lenses</b>							
Eyecode™ SV	Thin&Lite® 1.67	-13.00 to +9.00			●	●	●
	Airwear®	-10.00 to +9.00			●	●	
Essilor Fit™ SV	Thin&Lite® 1.67	-13.00 to +9.00			●	●	●
	Airwear®	-10.00 to +9.00			●	●	
Essilor Azio™ SV	Thin&Lite® 1.67	-13.00 to +9.00			●	●	●
	Airwear®	-10.00 to +9.00			●	●	
Essilor 360™ SV	Thin&Lite® 1.67	-13.00 to +9.00			●	●	●
	Airwear®	-10.00 to +9.00			●	●	